

KURAWAKA NŌ TE RERENGA WAIRUA / KŌKOWAI NŌ TE PĀ KAWAKAWA / PARUPARU NŌ PERIA



TAI O HĪ
TAI O HĀ

WĀNANGA TOI SERIES



TOI NGĀPUHI

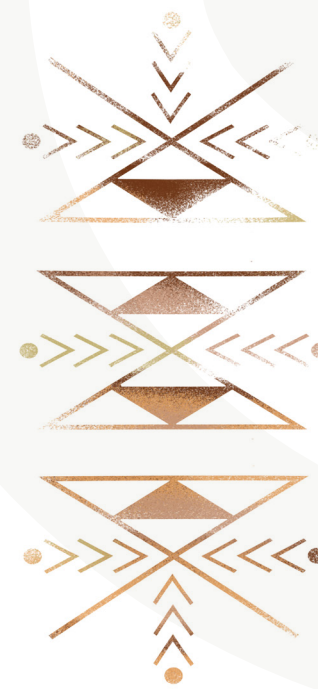
www.toingapuhi.co.nz



Nei rā te reo karanga a te kāhui taiohi o te Tai o Hī Tai o Hā wānanga kia huihui mai ki te whakamānutanga o te whakaaturanga nei, a Tai o Hī Tai o Hā.

The kāhui taiohi invite you to Tai o Hī Tai o Hā - the inaugural exhibition: a presentation of our current journey's within toi Māori.

Tai o Hī Tai o Hā is a collective of ringatoi, whānau and hoa aropā taken up by successive waves of tupuna creativity. These waves gather, form and express diverse Māori ways of thinking, being and making through toi. Haramai tētahi āhua!



POSTER ART DESCRIPTION

The foundation for our design comes from a Pākati design from Hori, which was then digitised and manipulated by both Symphony and Rongomai - using a palette of Kurawaka, Kōkōwai and Paruparu collected by Symphony in Te Rerenga Wairua, Te Pā Kawakawa and Peria respectively.

Written by taiohi Amelia Blundell, with Rongomai Hoskins and Dina McLeod on behalf of te Kāhui Taiohi.

Photographs by Bethany Edmunds, Rebecca Toki and Erana Fenton



WĀNANGA TUATAHĪ: FEBRUARY 10TH -14TH 2021

KIA KAWEA TĀTOU I TE REHIA!

Our journey began nestled in the Hokianga at Waiwhatawhata marae, Omapere. We stood in a circle, huddled under umbrellas at the edges of the marae ātea. Some of us met for the first time and others were reunited for what would be our wānanga tuatahi.

The mauri of the haukāinga and their whare tūpuna Te Kai Waha opened our ngākau to the limitless potentiality of the Tai o Hī Tai o Hā wānanga. Following the settling whaikorero from Matua John and being (literally) tied together through whakawhanaungatanga by the magic of our pou kaitiaki Wiremu, Kawiti and Anaru, we found ourselves ready for the many mātanga, curated for us by Bethany, Bex, Gail and the Toi Ngāpuhi whānau. We heard from Charles, whose kōrero brought ngā mahi a rēhia to the forefront of our kaupapa – setting the foundation for five days of making and creating through joy. 'Kia kaweā tātou i te rehia!'

A short wander from the awa, we huddled around the mahi toi of our ringatoi; Nikau, Makareta, Noa, Horomona and Dot, listening intently and wondering where we would put our energy. Our days started with taha tinana and ended with us all falling asleep to the sounds of Horomona playing taonga puoro. To the rhythm of Ka noho mai kaharau, taught to us by Nore, Jasmin, and Dallas, we would move through the spaces of Toi Whakaari, Aute, Muka, Uku and Taonga Puoro.

We would never be short of whakaaro after visits from Eamon, Alex, Ngāriki and Ruthie. Settled under the canopy of the Waipoua forest we listened to Conrad, as he shared his pūrākau of the kauri and the tohora whilst we gazed upon Tāne Māhuta. We visited Manea, and listened to the korero and felt our place as descendants following in the footsteps of the great tupuna Kupe. At Waiwhatawhata marae, we felt the endless joy available to us as Ngāpuhi-nui-tonu.





WĀNANGA TUARUA: MARCH 24TH -28TH 2021

HE WAKA EKE NOA

For our wānanga tuarua we met in the heat of Tama-nui-te-rā and at Te Poho o Ngāti Kahu, Kauhanga marae. Welcomed on by taitamariki we instantly felt the warmth of the haukāinga and the beautiful colours of the whareniui which instantly created a stillness in our rōpū.

We laid calm under the paintings of some of our tupuna and moved in ebbs and flows like the blending of the colours through the whareniui as we listened to all of the pukenga kōrero from those such as Theresa Reihana and Matua Bernard. Our days started with waka drills and the calls of Matua Uru and ended with the freedom and expansiveness of our imaginations after days spent with our ringatoi; Billy, Anikaaro, Hine, Kylie and Whaea Betsy. Standing under the whetū listening to matua Jack and looking over the fruits of Te Rā sail with whaea Ruth Port. It was here that we were reminded, once again, of the greatness that has been passed down to us through our tūpuna. We were privileged to sit with these taonga tuku iho with the awahi from whaea Whina. At Kauhanga Marae we witnessed the determination and innovation that has come before us and we felt the limitless potential available to us in our mahi toi if we were to take up Matua Ikanui's wero to us all. As we looked forward, we could

all sense the inevitable uncertainty, but after our wiki in Muriwhenua we could find peace in our relationships whether it be taiohi - ringatoi, tuakana - teina, tauira - kaiako, haukāinga-manuhiri - whanaunga.

At both of our wānanga we felt the immense privilege we have as taiohi to be on this journey and to be learning about mahi toi from many different ringatoi. From Nikau explaining how to say Aute with all the care and mana it deserves, to watching whaea Betsy propagate more pingao to restore the balance after we had harvested, we felt the real sense of kaitiakitanga our ringatoi have for our taiao, mātauranga and reo.

Along the way we heard some whānau express the sense of pōuri that exists from not having these same opportunities. To that we would say our journey is your journey. Without the opportunity afforded to us from Toi Ngāpuhi and the space afforded to us from both the haukāinga - to noho on your marae, wānanga on your whenua, learn in your whare tūpuna and become full of your kai, manaakitanga, and whakaaro we would not have made it here. We hope you celebrate our mahi toi as a reflection of yourselves and everything you have so generously shared and continue to share with us. Ngā mihi nui ki a koutou.





Amelia is a story-teller both in spoken and written forms. She loves landscape architecture and design and also painting and drawing. Amelia is a tactile person so creating with her hands is important to her, whether it's planting, growing and harvesting or painting and drawing. Amelia paints with watercolours and oil paints on leftover pieces of wood or paper.

One thing that Amelia really wants to accomplish in her creative practice is learning to weave with various materials. Learning tikanga and te reo Māori is also important to Amelia as she believes that this is important to enrich her creative practices and is an essential part of who she is.

Amelia believes that everyone is creative and should have the right to express themselves in the forms they need to, especially young people who can struggle in mainstream education but through creative practices, can learn so much.



Ko Maungaemiemi te maunga
 Ko Whangaroa te moana
 Ko Ngātokimatawhaorua me
 Maamari ngā waka
 Ko Ururoa te tūpuna
 He uri ahau no Ngāpuhi me
 Ngāti Kahu ki Whangaroa
 Ko Blundell tōku whānau
 Kei te Whanganui-A-Tara ahau e noho ana
 Ko Amelia Blundell tōku ingoa



Puketiti ki runga
 Whakanekeneke ki raro
 Ngā tini o Patuone ka puta
 Tēnā ko Ngā Hao
 He uri anō ahau nō Ngāti Hau,
 Ngāti Manu, Ngāti Kuta me Ngāti Rangī
 Tihei mauri ora!



Jojo started Mau Mākau when he was 10 back in 2017. He studies alongside others under Te Whare Tū Tāua o Aotearoa and he trains in Kaikohe under Bo McGee with Te Koohao Tuu Tāua o Ngāpuhi. In November 2018, Jojo graded for his Poutahi at his marae, Whakapara and in 2020 he graded Pouwhā.

Inspiration for Jojo comes from several places. He's inspired by matua Kipa Munro and Bo McGee and Kiani Morunga is also someone he looks up to. When he was undertaking the grading, Jojo had to make his own tīpare where he learnt to cross stitch and taaniko. Jojo's Mum taught him the art of taaniko.

Initially, Jojo thought that art was just drawing but through attending Tai o hī Tai o hā, he has realised how broad art is and that there are lots of forms of creativity. Jojo believes that Toi Māori comes from his tūpuna from generation to generation and that it's important learning from Ngāpuhi artists because it's his people and his own mātauranga.





Dina is a visual artist who mostly uses acrylics in her painting but she's also an illustrator and she uses tools such as Pro Create and Adobe to help in her creativity. Dina is really keen to experiment in future with materials such as raranga, tāniko and whakairo.

Part of Dina's desire to be an established artist is her wish to use her skills to give back to her iwi and her larger community. By doing this, she wants to inspire rangatahi and young Maori artists who are finding their way. Dina sees sharing knowledge of toi as important and points to ringatoi such as Robyn Kahukiwa, Nikau Hindin plus local ringatoi such as Dorothy Waetford as inspirational.

Dina would love to see Te Taitokerau people be able to make a career out of art and also see art be woven into the fabric of society in the North so that it inspires everyone.



Ko Onekainga te maunga
 Ko Wairahi te awa
 Ko Māhuhu-ki-te-rangi me
 Ngātokimatawhaorua
 ngā waka
 Ko Whakapaumahara te marae
 Ko Ngāti Rehua te hapū
 Ko Ngāti Wai me Ngāti Hine ngā iwi
 Ko Dina Tiare McLeod tōku ingoa



Ko Huruiki me Kapowai ngā maunga
 Ko Whakapara me Waikare ngā awa
 Ko Ngāti Hau me Te Kapotai ngā hapū
 Ko Ngāpuhi te iwi
 Ko Ngātokimatawhaorua te waka
 Ko Whakapara me Te Turuki ngā marae
 Ko Te Ihi Nehua me Te Aaranga o Te Paa
 ngā whare tupuna

Twilight is a jewellery maker but she also loves other forms of creativity such as photography, modelling, weaving, flower arranging, digital art and metal stamping. Twilight is someone who likes to be able to problem solve, whether it's with figuring out systems, helping set up businesses or finding the right people to help her get ideas realised.

One area that Twilight is working on is electroforming which is turning metals and other natural components into jewellery which is a difficult thing to do in New Zealand right now because of the struggle to find the right materials.

Twilight is a creative ideas person who likes to share her art by gifting koha pieces or sharing ways of creating with youth groups. Twilight also pays tribute to the people who have influenced her such as her nanny from Waikare and others such as Rangī Kipa.

A priority for Twilight is keeping traditional art forms alive.

HORI TE TAI



Hori is a visual artist who is currently doing mahi with the Te Toki Voyaging Trust whānau on waka hourua where he's learnt about waka traditions, kōrero tuku iho and connections through the Pacific. Hori is particularly interested in the different types of lashings as part of the waka traditions and wants to do further research on this.

Hori's visual art is based on drawing incorporating different Māori forms and elements connected to his own personal perspective. He's also interested in painting and printing and he wants to learn more about the Northern style of Toi Māori including understanding appropriate tikanga and what symbols and forms are traditional and unique to the North.

A huge influence on Hori's creative practice is his brother who is skilled at toi whakairo. Hori's travels to Hawai'i where he watched the traditional practice of tattooing with uhi, has led to him wanting to learn more about uhi traditions in Aotearoa and the possible revival of those traditions.

Ko Te Reinga te maunga,
ko Te Reinga te tangata
ko Ngāti Te Reinga te hapū
Ko Waihou Te Ukaipo
ko Te Rarawa Kaiwhare te iwi



KEREAMA KARA



Kereama is interested in creativity across several areas. He sketches and does pencil drawings, mainly from images he's seen. These sketches are often in black and white and he's learning the art of shading carefully. Kereama is also interested in anime which is both hand-drawn and computer animation which originated in Japan.

Music is another creative interest for Kereama, particularly playing the guitar and drumming and he also likes expressing himself through digital tools. For example, he creates and makes games, from creating the characters and story-lines through to drawing them up and making them live through animation. Part of this process for Kereama is making games using things that are based in Māori tikanga and traditions.

Ko Putahi me Huruiki ngā maunga
Ko Wiroro me Waiariki ngā awa
Ko Ngātokimatawhaorua te waka
Ko Te Kotahitanga me Whakapara
ngā marae
Ko Te Matarahurahu, Ko Ngāti Hau,
Ko Ngāti Hao ngā hapū
Ko Ngāpuhi te iwi





Ko Maunga Piko te maunga
 Ko Pārengarenga te moana
 Ko Waiora te marae
 Ko Ngāti Kuri te iwi
 Ko Pohotiare te hapū



Lydia's interests are in photography and visual arts. She is currently studying at the Natural Ōra Clinic in Kaitia studying mirimiri and romiromi which are traditional Māori healing practices. Lydia would love to learn more about Ngāpuhi art and the style that is distinctly Ngāpuhi. She'd also like to help grow and normalise woman carvers within the North and incorporate that practice into her art pieces.

Lydia's tāngata pūkenga are her mum, aunty and nan. She says these three women have been her support system and raised her with the values of humility, hard work and the importance of whānau.

Lydia would love to help other rangatahi out there who are wanting a career in the arts and to share the message that you don't have to walk between te ao Māori/te ao Pakeha and feel you have to sacrifice one for another.



Mikara is interested in many artforms including weaving, painting, drawing, textiles/fashion, and poetry. But probably her strongest interest and strength right now is in the visual arts of drawing and painting where she likes investigating shading and colour.

In future, Mikara would like to be able to have a career in visual arts where she can sell her art and help others through charitable works.

Mikara's inspirational pūkenga include the great European artists, Da Vinci and Van Gogh and closer to home, Toi Te Rito Maihi who lives near to Mikara and as well as still being a practising and nationally well-known artist, teaches weaving in Kaikohe.



Pūhangatohorā te maunga
 Punākitere te awa
 Ngātokimatawhaorua te waka
 Okorihi te marae
 Ngāti Ueoneone te hapū
 Ngāpuhi te iwi



RONGOMAI HOSKINS



Ko Huruiki te maunga
 Ko Whakapara te awa
 Ko Whangaruru te moana
 Ko Mātaatua me
 Ngātokimatawhaorua ngā waka
 Ko Whakapara te marae
 Ko Ngāti Hau me Ngāti Hao ngā hapū
 Ko Ngāpuhi te iwi



Rongomai is a multi-disciplinary artist who works across visual arts, photography and illustration. Her interest in the creative arts started at high school and continued at university when she did a design degree. Since then, she's been focused on curation and research in the world of museums and galleries.

Rongomai is experienced in the use of photography in her arts practice, both digital and analog and as well, enjoys painting and illustration using graphite, ink, watercolour and oils.

One area that Rongomai is really keen to engage further with is customary practices and their contemporary uses and she'd like to contribute towards an art gallery that has Māori at its centre and reflects Māori.

Some of the pūkenga that Rongomai most admires are Te Kawehau Hoskins (tōna Whaea), Toi Te Rito Maihi, Mata Aho, Hanahiva Rose, Megan Tamati-Quenell, Maata Wharehoka and Ruakere Hond.



PAIRAMA WOODBURY



Pairama is a kapa haka artist who loves singing waiata but recently has also started doing stencil work and painting. For the stencil and painting mahi, he has had help from his mother who is also an experienced weaver. Other inspiring people are his Papa Hemi and teachers matua Bobby McDonald and Whaea Imiria who helped him learn various painting techniques.

Pairama believes that it's good to show Ngāpuhi rangatahi that there are different paths and different ways of working and that toi is one that many people could do. It is a skill that will never leave you.



Ko Ngātokimatawhaorua te waka
 Ko Nukutawhiti te tangata o runga
 Ko Te Ramaroa te maunga
 Ko Matariki te awa
 Ko Pakanae te marae
 Ko Ngāpuhi te iwi
 Ko Te Hikutu te hapū





Symphony enjoys the creative areas of tā moko, whakairo and graphic design. She loves studying and using the patterns within these art forms in her own work and she also likes to create her own anime characters and give them Māori characteristics.

Symphony is a self-taught tā moko artist and while she uses contemporary tools and materials, her designs are often based on traditional patterns. Her whakairo techniques are based on Ngāpuhi and Tainui methods and for her graphic designs, she uses Adobe Illustrator and InDesign to help create her work.

In future, Symphony would like to be an established tā moko and graphic design artist who can both work for and provide work for her local community. She would also like to give back to her local community. Symphony's pūkenga are her whanau and community.



Ko Ngātokimatawahaorua te waka
 Ko Nukutawhiti te ariki o runga
 Ko Puke-huia me Puke-haua
 ngā maunga
 Ko Ngāti Kaharau me Ngāti Hau
 ngā hapū
 Ko Ngāpuhi te iwi
 Ko Tepiiti te marae
 Ko Taitamatane te whare
 Ko Mokai Awhina te whare kai
 Ko Omanaia te whenua
 Ko Tapiki tu te urupa
 Ko Tou Kahawai te awa
 Ko Hokianga Whakapou Karakia
 te moana



RĀMAI NGAKURU



Ko Kai a te Whetu te maunga
 Ko Waimamaku te awa
 Ko Ngātokimatawahaorua te waka
 Ko te Whakamaharatanga te marae
 Ko Ngāti Pou te hapū
 Ko Te Roroa me Ngāpuhi ngā iwi



Rāmai has always been drawn to painting and drawing. She loves being able to pick up a paint brush and use her hand to move freely, adding and taking away layers until she is satisfied and she's achieved a result she is happy with. Raimai finds this process simple and easy, almost instinctive and she enjoys the way brush strokes create new detail which can then lead her on to find new ideas.

He uri tenei nō Ngāpuhi, Rāmai believes it's important to learn the pukenga within her own iwi to keep the iwi's styles, patterns and toi alive.

Rāmai is inspired by the many Ngāpuhi artists who are willing to share their knowledge and techniques and are creating opportunities for people like her. She believes that toi is a taonga that is passed on from one generation to the next and she wants to be able to pass her knowledge too.



Ko Taniwha te maunga
 Ko Hokianga te awa
 Ko Hokianga whakapau karakia te moana.
 Ko Ngātokimatawhaorua te waka
 Ko Nukutawhiti te tangata o te waka
 Ko toki mata-hourua te whare
 Ko Tauteihiihi te marae
 Ko Te Pakeretu te urupa.
 Ko Te ihu tai te hapū
 Ko Ngapuhi te iwi
 No kohukohu ahau
 Ko Waiora toku ingoa



Waiora is interested in many areas of toi Māori, from visual arts to performing arts and many areas in-between. She enjoys singing and performing in kapa haka and she is also a painter who uses brushes, hessian, harakeke, pens and pencils in her craft.

While Waiora has up until now been focused on kowhaiwhai, tukutuku and tā moko, she has recently become more interested in the processes of whakairo and taonga pūoro.

In future she would like to capture stories of old and gain as much knowledge as possible that has been handed down from her tupuna while also being able to have a modern outlook on toi Māori.

Waiora's great influence has been her Uncle BJ Natanahira for his vast mātauranga, his mentorship of her and her toi Māori journey. He has also inspired her to challenge the norms.



Onekainga te maunga
 Wairahi te awa
 Whakapaumahara te marae
 Ngātokimatawhaorua te waka
 Te Whanau whero me te kauri mua
 ōku hāpu
 Ngāti wai me Ngāti Hine ngā iwi
 Ko Bernard me Kiri ōku matua
 Ko Te Awa League Neumann taku ingoa

Te Awa is a performing artist and a visual artist. He particularly enjoys his kapa haka and painting. He is also involved in the tuakana teina programme at his secondary school and he loves being a positive role model to those younger than him.

A thirst to learn more about his culture drives Te Awa, specifically learning more waiata from Te Taitokerau. He'd also like to understand the whakaaro behind the arts both in kapa haka and in painting as he knows this will help his understanding and development of toi Māori.

Te Awa's aunts have been a major influence on him and he enjoys collaborating with them. They are very creative artists and hold wananga for the youth at the marae or other venues to keep the knowledge alive and ongoing.





Ko Mataatua te waka
 Ko Ohau Tieke me Whakarara te maunga
 Ko Matauri te moana
 Ko Ngāti Kauau me Ngāti Kura
 ngā hapū
 Ko Ngāpuhi te iwi
 Ko Zoe Moana Murray ahau



Zoe is a visual artist who likes working with clay, fibres and paint and uses art to express her emotions, dreams and desires. She also loves music and she can play the piano, has taught herself ukulele and sings waiata from kapa haka.

Zoe has worked across a range of mediums in visual arts. This includes watercolour and acrylic paints, ceramics and linoleum printing. She's also recently discovered taniko and would like to learn raranga and whatu muka as well. Zoe was born and raised in Southern California but relocated to Aotearoa at the beginning of her Tai o Hi Tai o Ha journey.

While Zoe has developed her creative skills through watching her sister, a graphic design artist, as well as taking occasional summer art classes as a child, it's been mostly her own experimentation and love for the arts that's guided her.

Inspirations for Zoe are her atua wāhine, her kaumatua and her koro.



He uri tenei no Hokianga, ki taha o
 tōku whaea
 Ko Panguru te maunga
 Te Puna o Te Ao Marama me Ngahuia
 ngā marae
 Te Waiariki, Ngāti Manawa, Ngai Tupoto
 me Ngāti Manu ngā hapū
 Ko Ngāpuhi raua ko Te Rarawa ngā iwi

Nikau is a visual artist who enjoys creating mixed media pieces, using paper and collage and drawing. Nikau enjoys all forms of artistic expression and appreciates the way creators have the initial idea and then bring it to light in their own unique way. She finds that when creatives share the journey and process behind the works it's just as fascinating as the mahi produced.

Using her own pen style and way of drawing and her excellent cutting skills using a scalpel and scissors has set Nikau up well. She also knows her way around a 35mm camera and digital DSLR and she has a basic mohiotanga of screen printing & whakairo.

Nikau feels that she is fortunate to be raised around a community of creatives working in all mediums. Some of these are:

Katerina Te Heikōkō Mataira, Natasha Keating, Mandy Sunlight, Tracey Tawhiao, Te Rawhitiroa Bosch, Jos Wheeler, Nikau Hindin, Jasmine Fuller, Robyn Kahukiwa, Basquiat, and Ans Westra.



HARA MAI TĒTAHI ĀHUA! KA TUKUNA ATU E MĀTOU NGĀ KUPU WHAKAMIHI KI A KOUTOU KATOĀ. NĀ TŌ KOUTOU IHIRANGARANGA TE KAUPAPA NEI I HIKI, KOIA KO TAI O HĪ TAI O HĀ!

Ko te mihi tuatahi ki ngā taiohi, ko koutou ngā whetu e piataata mai ana! Koutou ko Amelia Blundell, Joseph Edmonds, Dina McCleod, Twilight Edwards, Hori Te Tai, Kereama Kara, Lydia Day, Mikara Hita, Rongomai Hoskins, Pairama Woodbury, Symphony Morunga, Ramai Ngakuru, Waiora Mete-Cherrington, Te Awa Neumann, Zoe Moana Murray, Nikau Campbell. Ki te hunga e huna ana tēnei te mihi, ko Tumaitawhiti Henare, Romaine Reti, Cody Paparoa, rātou ko Te Kaurinui Parata. Kia koutou hoki ngā whānau whānui e tautoko mai ana, nā ō koutou ringa tēnei kahui i hāpai.

Ka rere atu ngā mihi maioha ki ngā hau kainga mai ngā marae mahana, i manaakitia mai kia matou, ko Waiwhatawhata marae kei Hokianga, ko Kauhanga marae kei Muriwhenua, me Terenga Paraoa marae kei Whangarei.

Ki ngā Rangatira i poipoia e ngā kakano o Toi Ngāpuhi, ko te poari ko Bernard Makoare, Moe Milne, Rau Hoskins, Dorothy Waetford, rātou Kura Te Waru Rewiri, e kore e mimiti ngā mihi aroha kia koutou.

He piki mihi tēnei ki a koutou ngā kaikōrero, ngā ringatoi me ngā pūkenga, tō koutou wheako i tohatoha mai! Koutou ko Nikau Hindin, Makareta Jahnke, Horomona Horo, Noa Campbell, Dallas King, Charles Te Ahukaramu Royal, Nore and Jasmine Martin, Eamon Nathan, Alex Nathan, Ngariki Ngatae, Fred Renata, Jack Thatcher, Hemi Eruera, Billy Harrison, Anikaaro Harawira, Hine Waitai-Dye, Sheridan Waitai, Betsy Young, Kylie Simeon, Ruth Port, Te Ikanui Kingi-Waiāua, Whina Te Whiu, Ururāiaha Awarau, BJ Natanahira, Sarah Hikuroa, Amorangi Hikuroa, Nigel Borell, Natasha Keating, Lenny Murupaenga, Te Warihi and Janet Hetaraka, Marino Duke, Ecal a.k.a Erima Davis, Majic Paora.

Ki ngā ringa hāpai e te kaupapa nei, arā ko te roopu whakahaere, na koutou te kaha o ngā hoe e ārahi ana tō tatou waka. Ko Bethany Edmunds, Andrew Cook, Rebecca Toki, Gail Richards, Wiremu Sarich, Kawiti Waetford, Erana Fenton, Kyra Clarke, Brigette Riddle, Erena Kara, rātou ko Taura Eruera.



Anei hoki ngā mihi waimarie ki ngā roopu tautoko i homai ngā putea tautoko. Nā tō koutou tautoko mai he toa takitini i puta, na reira ka nui rā te mihi ki a Creative NZ, Foundation North, NZ Lotteries Commission me Northland Community Trust. Ratou ko koutou ngā hoamahi he pou Awhina koutou ko Creative Northland, Toi Māori MAI programme, Te Rarawa, Toimata Foundation, Te Aho Tū Roa, Tautoko te Taitokerau, ĀKAU, Te Ahu Museum, Manea Footprints of Kupe, Auckland University, Te Hiku Media, rātou ko Ngati Hine FM.

TŪTURU WHAKAMAUA KIA TINA! TINA! HARA MAI TE TOKI. HAUMI E, HUI E, TĀIKI E!



TUMAITAWHITI HENARE



CODY PAPAROA



ROMAINE RETI



CORE FUNDING PARTNER



FUNDERS



ROOPU TAUTOKO





TOI NGĀPUHI

Inspiring excellence in
Ngāpuhi cultural and
creative expression
across Te Taitokerau

Te whakaoho i te ihiihi,
mō te kounga o ngā
tikanga, me ngā
auahatanga o Ngāpuhi,
puta noa i Te Taitokerau.

Contact

info@toingapuhi.co.nz

Physical Address:

Level 1, 3 Cobham Road, Kerikeri

